



1500 STOOL BASE WITH 712 WELD PLATE

PART LEGEND	
A	712 Weld Plate
B	Column Shaft
C	Floor Anchor

FINISH AVAILABLE

1. Standard chrome
2. Architectural chrome
3. Standard powder paint
4. Premium powder paint

FLOOR ANCHORS

1. Type A-Toggle Anchor
2. Type B-Mounting Plate w/ screws
3. Type C-Concrete expansion

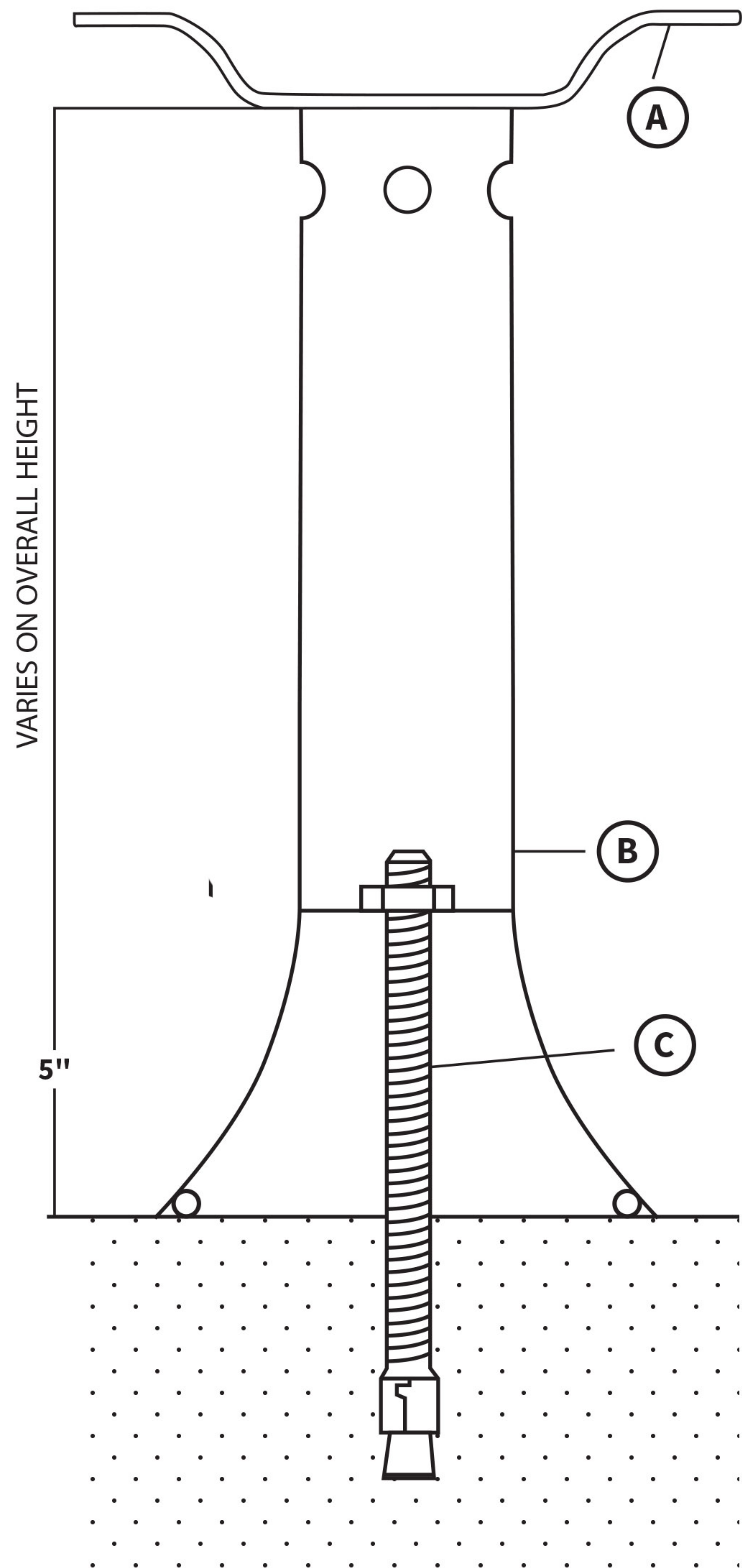
FOOTRINGS

1. 505- Cast Triangular
2. 606- Bent Flat Steel
3. 707- Round Tube Steel
4. 404- 360° Round Tube w/ Gussets

STANDARD HEIGHTS

1. 18" - To Top of Seat
2. 24" - To Top of Seat
3. 30" - To Top of Seat

* Special heights available subject to upcharge



TYPE-C